

📷 @haan.chen

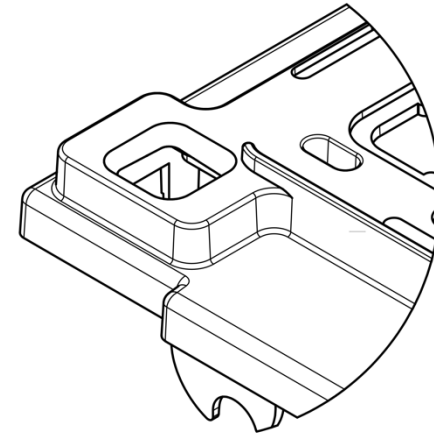
✉️ hello@zins.tax

Thanks for purchasing **binstax**! Here's how to use it:

1. It only takes Instax Square film by Fujifilm (ISO 800). Polaroid films or your favorite chocolate-chip cookies won't fit.
2. There's no battery needed; your **binstax** is fully mechanical.
3. The hook in the bottom right corner in the film compartment should be lowered to the bottom every time before you pop in a new pack of film. It will be in the right place after each film ejection; if not, move it down by turning the crank counterclockwise continuously. Otherwise, the ejection unit may not work properly.
4. Pull out and down on the R-Lock lever at the bottom of the RB67 camera body to detach the revolving adapter.
5. Attach **binstax** with film ejection slot facing upwards.
6. Pull out the dark slide and place it in the dark slide holder (it's the thing attached to the film door with a ton of holes).
7. Shoot and crank counterclockwise to eject. The film counter should go down by one.
8. Admire your shot. Have fun!

Here are some tips:

1. **binstax** comes with the original SQ1 viewfinder which you can use if you don't feel like carrying around the chunky eye-level viewfinder.



2. Always turn the crank counterclockwise (in the direction of the arrow engraved on the crank arm). A built-in one-way mechanism only allows the crank to rotate in the right direction and engages when the crank is being turned in the wrong direction, but if you continue to do so, you could overpower the mechanism, and something will break. In that case, you'll need a donor SQ1 for replacement parts.
3. Insert the dark slide straight into the body, not at an angle.
4. If you see a vertical line of white dots on the film, clean the rollers. To do that, open the film door and turn the crank slowly. Alternatively, you can blow the dirt off with compressed air.